

ARGOMENTI DI CHIRURGIA TORACICA

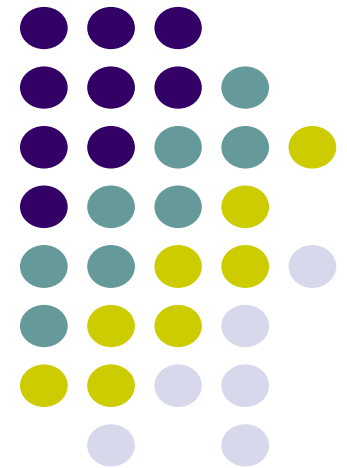
Patologia della trachea: Stenosi post-intubazione -
Fistola esofago-tracheale - Tumori della trachea

Aspetti Endoscopici

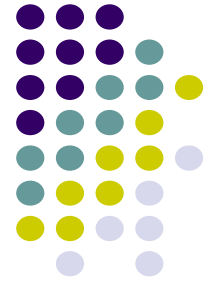
Parma, 3 Aprile 2012

Maria Majori

Endoscopia Toracica
Azienda Ospedaliero-Universitaria di Parma
mmajori@ao.pr.it



Strumenti

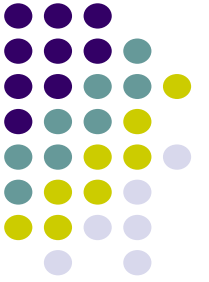


BRONCOSCOPIO FLESSIBILE

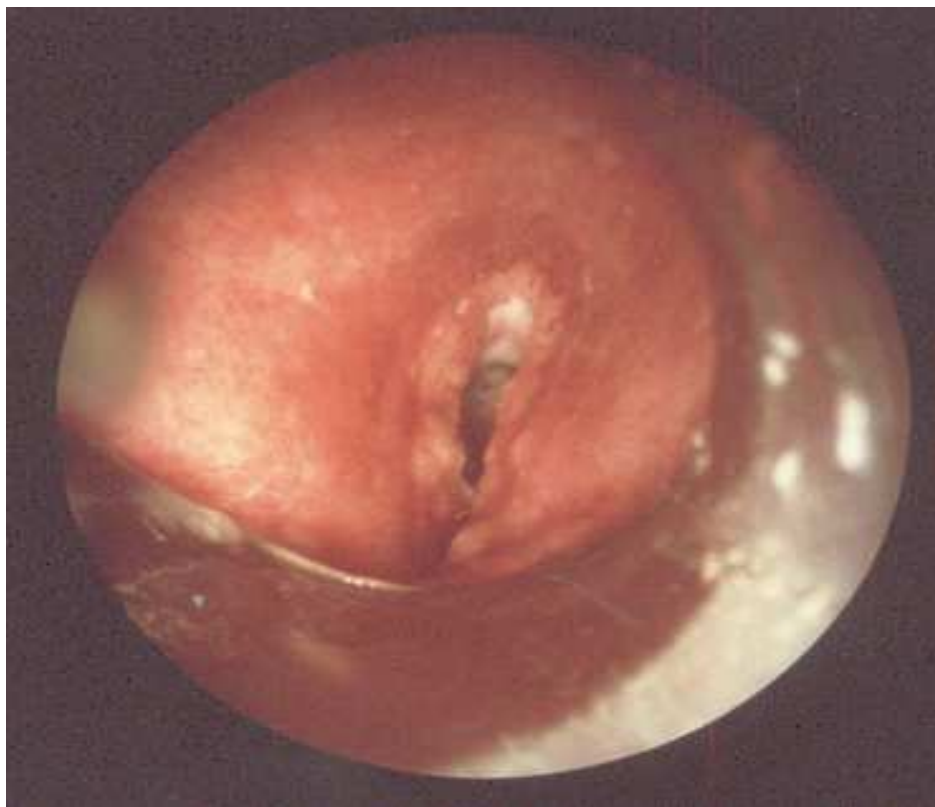


BRONCOSCOPIO RIGIDO

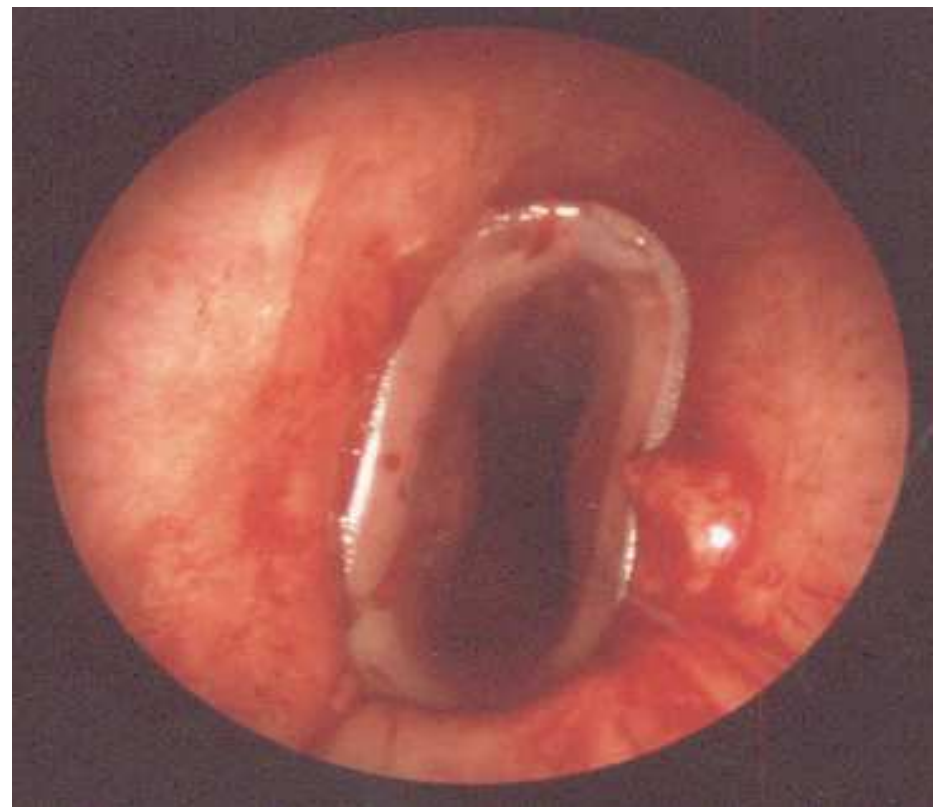
Broncoscopio Rigido



Broncoscopia Terapeutica



Prima del trattamento

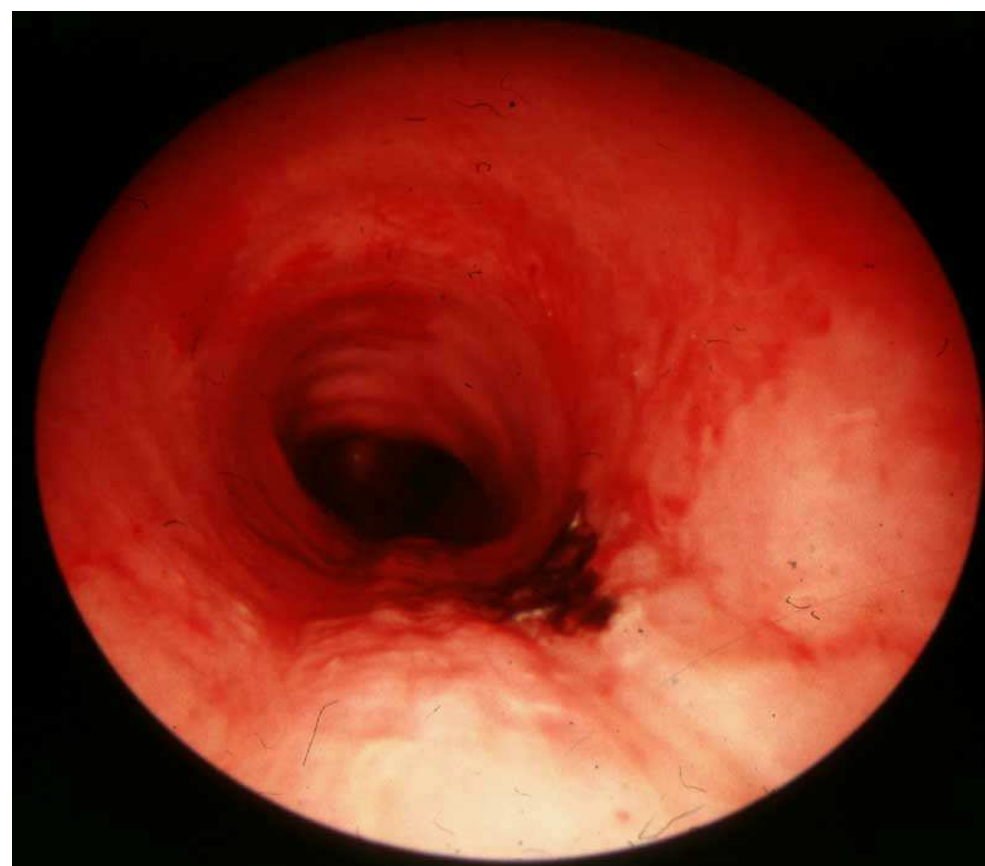


Dopo il trattamento

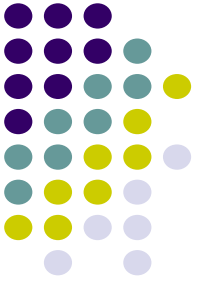
Broncoscopia Terapeutica



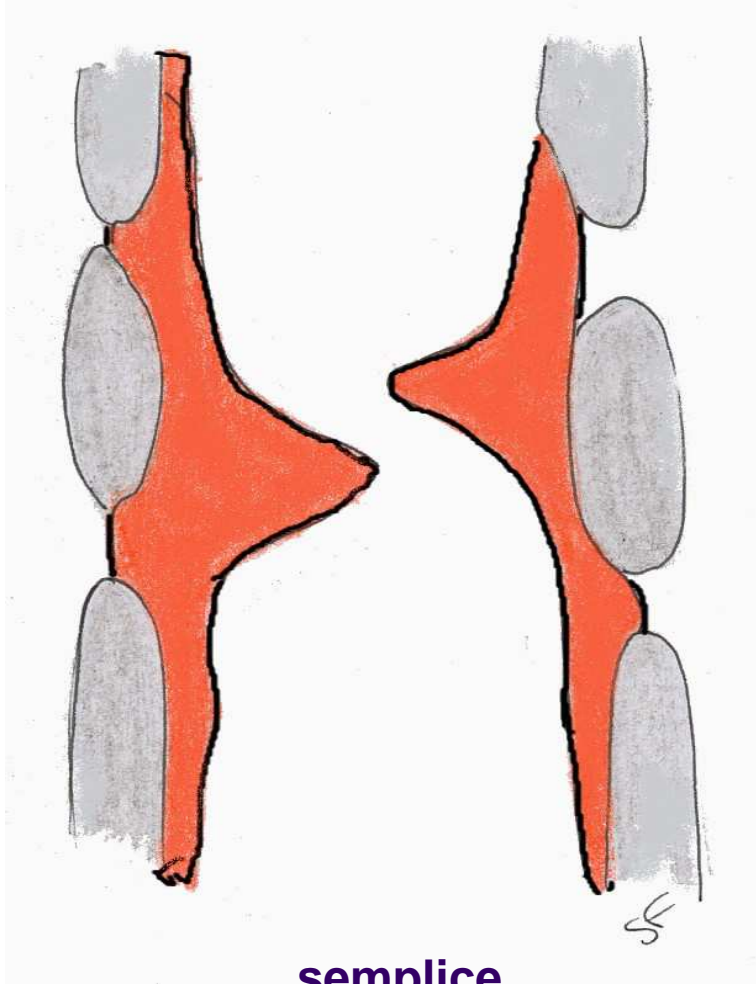
Prima del trattamento



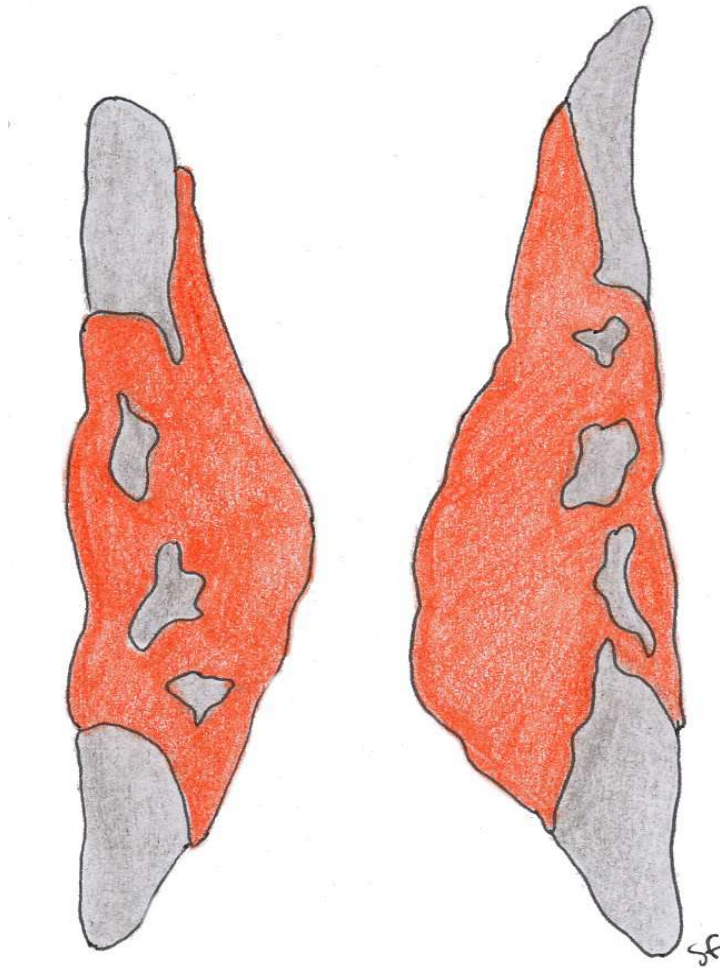
Dopo il trattamento



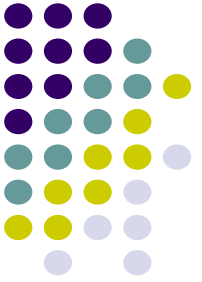
Stenosi Post-Intubazione



semplice



complessa



Stenosi Semplice

