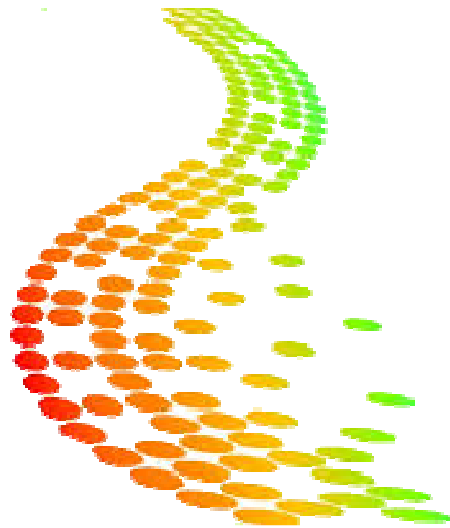


Cura e scienza al servizio dell'uomo

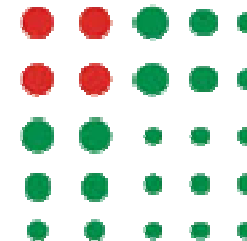


● ● ● ● ● SERVIZIO SANITARIO REGIONALE
● ● ● ● ● EMILIA-ROMAGNA
● ● ● ● ● Azienda Ospedaliero - Universitaria di Parma
● ● ● ● ●
● ● ● ● ●

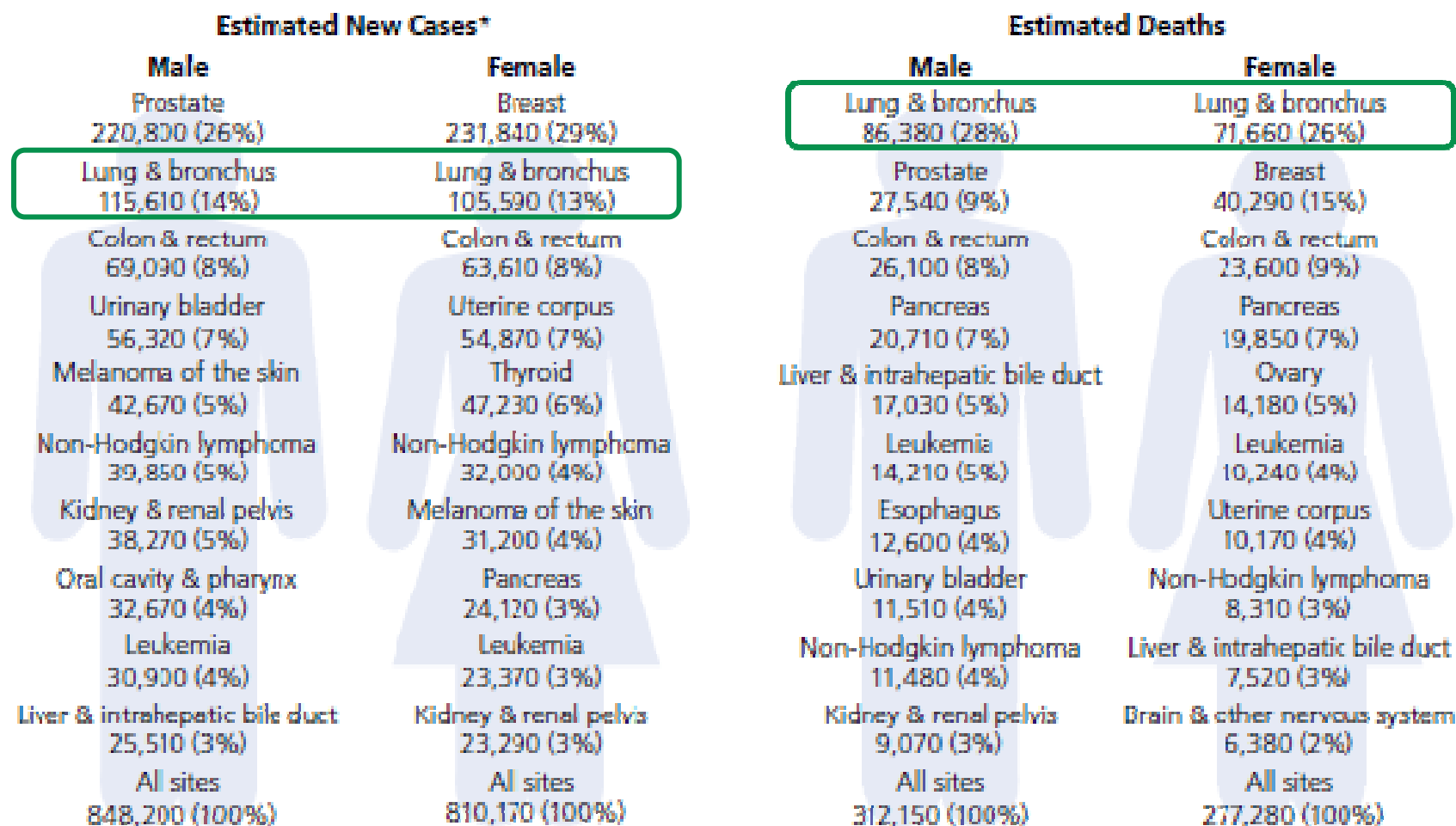
IL PERCORSO DIAGNOSTICO-TERAPEUTICO- ASSISTENZIALE DI ONCOLOGIA TORACICA



Dott.ssa Letizia Gnetti
U.O. Anatomia Patologica

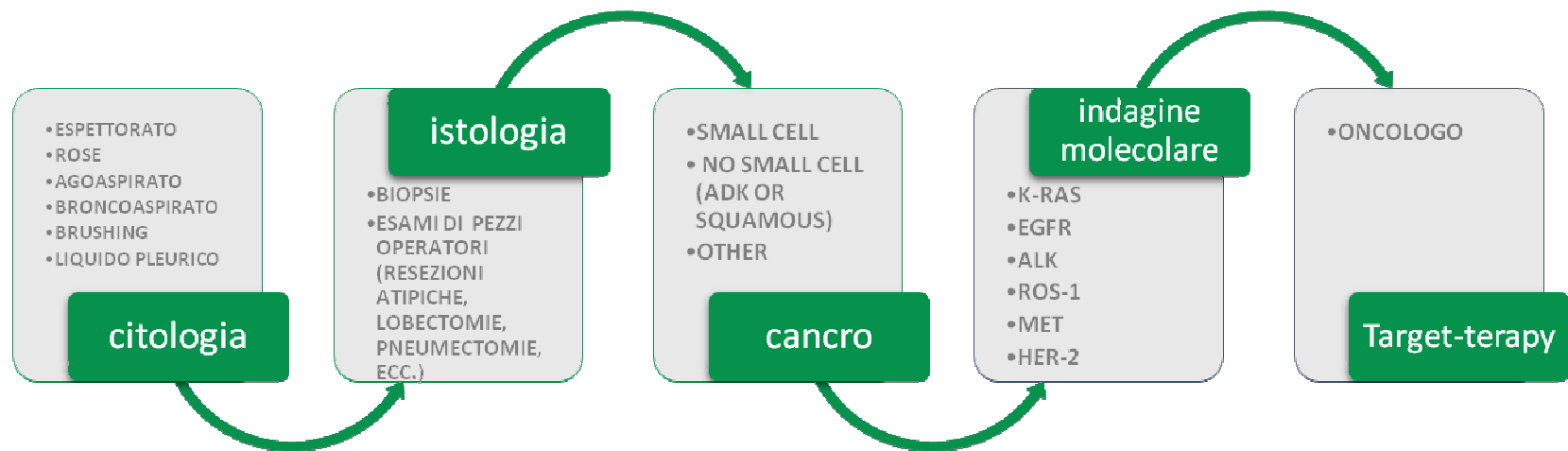


Leading sites of new cancer case and deaths – 2015 estimates



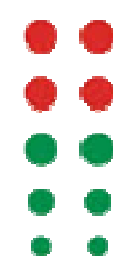
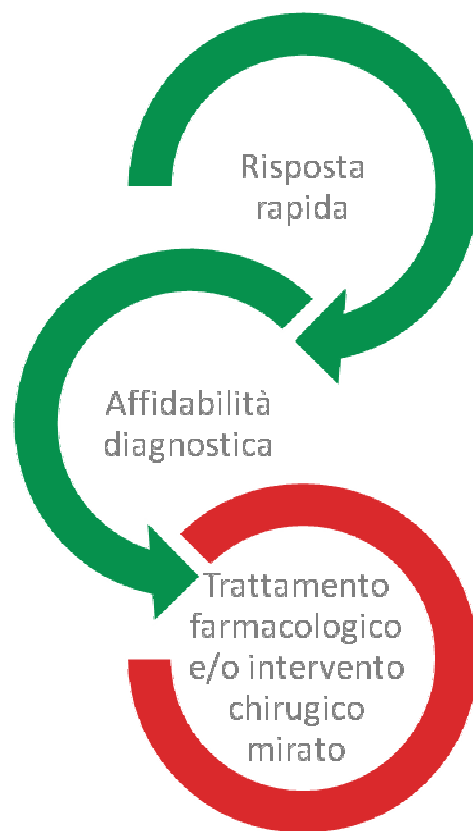
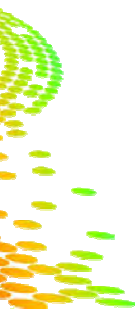
*Excludes basal cell and squamous cell skin cancers and in situ carcinoma except urinary bladder.

Diagnostica



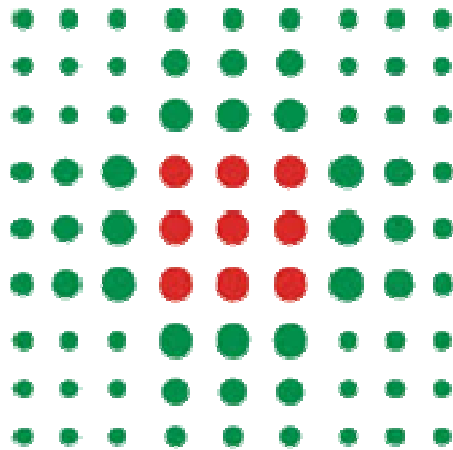


Perché affidare un paziente all'Ambulatorio di Oncologia Toracica



“Riunirsi insieme significa iniziare;
rimanere insieme significa progredire;
lavorare insieme significa avere
successo.”

Henry Ford



Cura e scienza al servizio dell'uomo

Grazie per l'attenzione