



SERVIZIO SANITARIO REGIONALE
EMILIA-ROMAGNA
Azienda Ospedaliero - Universitaria di Parma

Il percorso diagnostico-terapeutico-assistenziale
di Oncologia Toracica dell'AOU di Parma

CITOASSISTENZA o ROSE
Rapid On-Site Evaluation

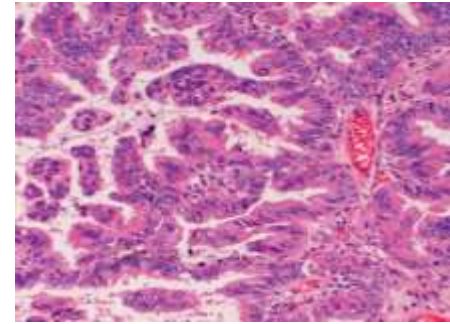
DAL SOSPETTO ALLA DIAGNOSI DI NEOPLASIA TORACICA

Dott.ssa Rita Nizzoli
Dott.ssa Letizia Gnetti



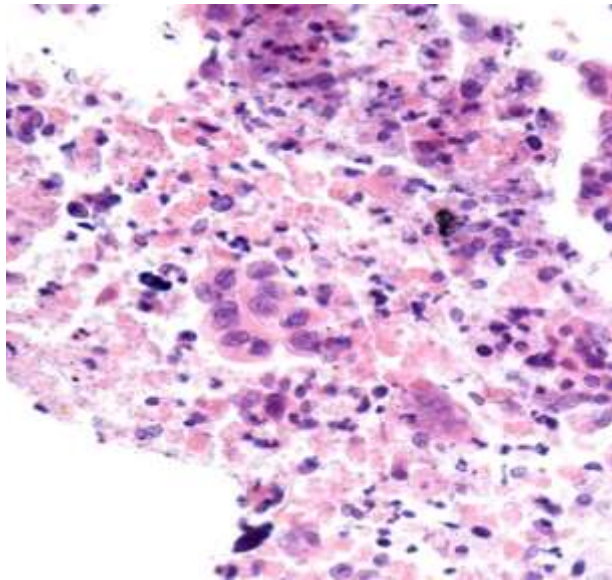
Parma, 5 novembre 2019

- ✓ ~ 25% dei tumori polmonari sono operabili >>
disponibilità del pezzo operatorio



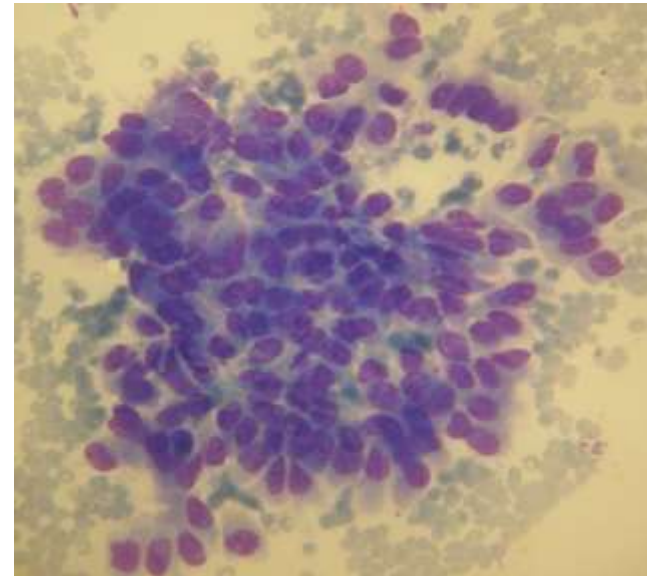
- ✓ ~ 75% tumori polmonari in stadio localmente avanzato >>
disponibilità di scarso materiale

piccole biopsie

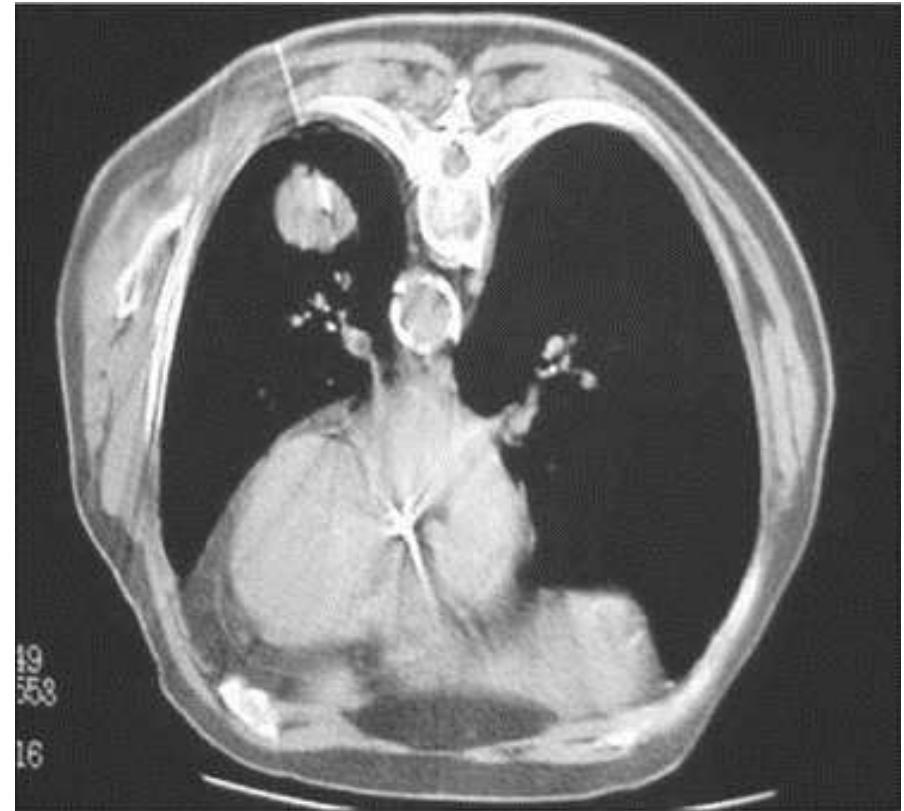
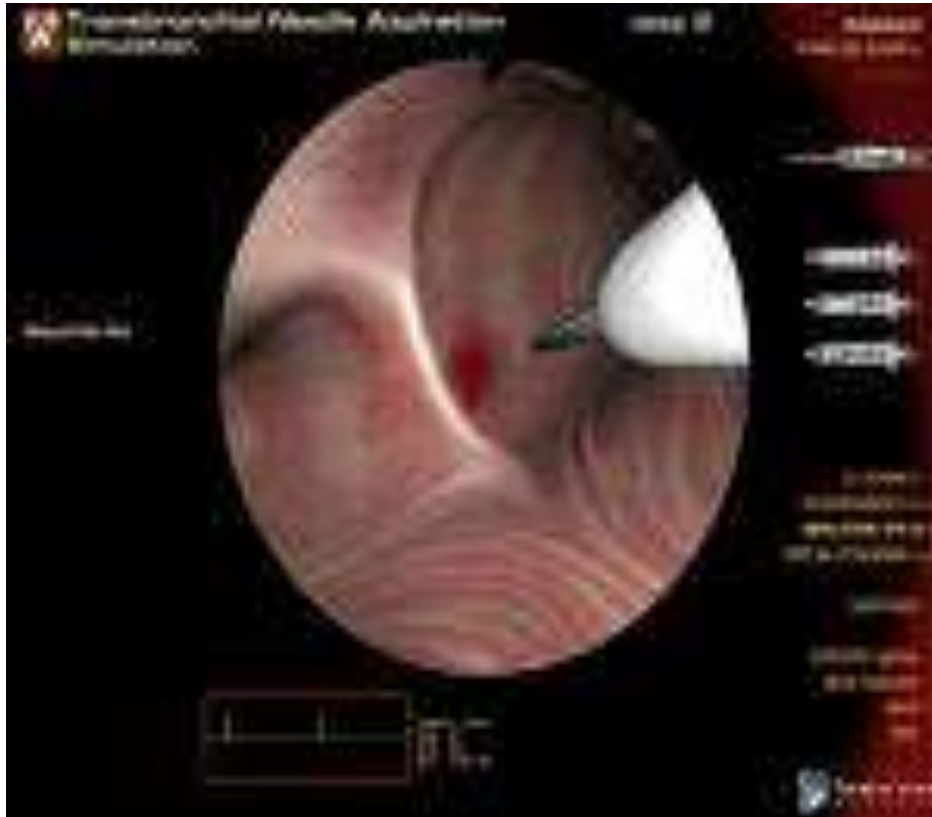


e/o

campioni citologici



**Needle procedures for diagnosis/staging:
TBNA, EBUS-TBNA, TTNA**



TBNA(+/-EBUS) / TTNA



strisci

TBB, Core Needle Biopsy



Apposizione



ROSE (rapid on-site evaluation)

coloraz. rapida (15'')



**esame citologico
estemporaneo**



Adeguato?

ROSE in TBNA+/-EBUS, TTNA nel NSCLC avanzato

Materiale cellulare ADEGUATO per:

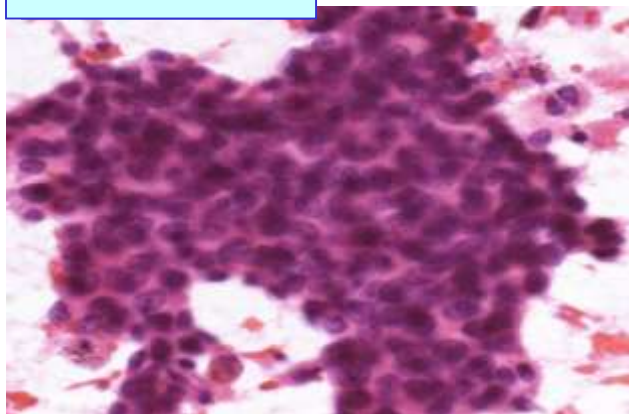
✓ - *diagnosi*

✓ - *test molecolari* (EGFR, KRAS, ALK, ROS1,
BRAF, MET, PDL1)

TBNA(+/-EBUS)/TTNA Optimal tumor sampling

Strisci

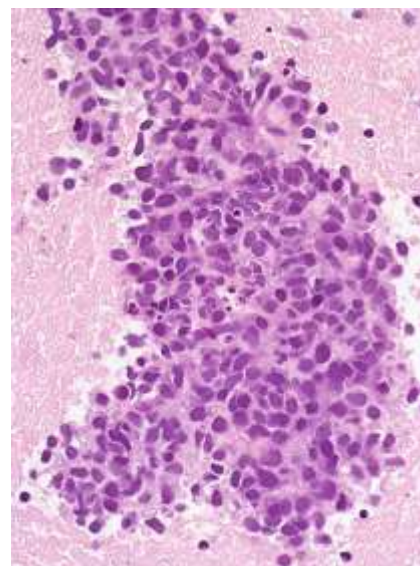
ROSE



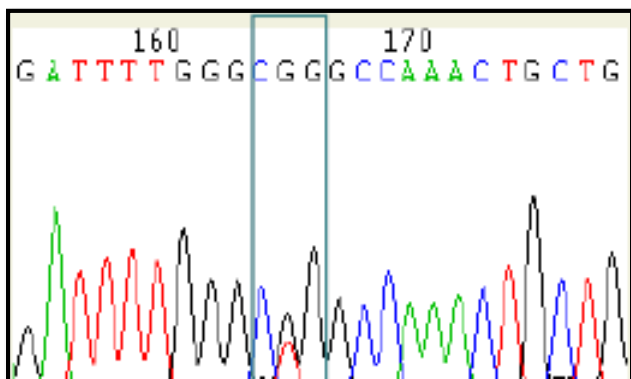
↓ scraping

+

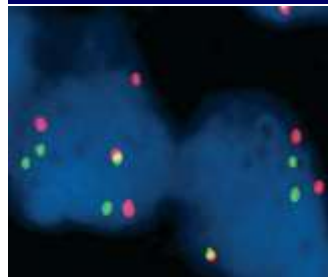
Cell block



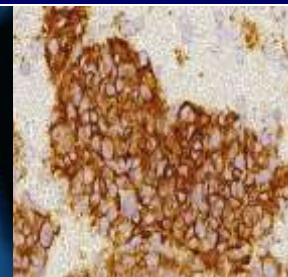
EGFR/KRAS/BRAF mutations



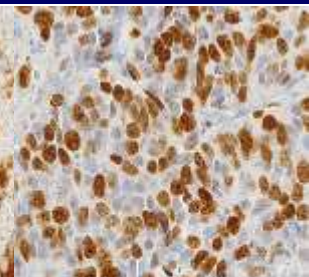
ALK, ROS1, PD-L1



FISH



IHC



TTF-1

**MULTIDISCIPLINARY
Team Meeting**

MMG



Grazie per l'attenzione!

Il mito della “precision medicine”

Pazienti con malattia in fase avanzata di polmonare

ROS1 positivo

EGFR mutati

ALK positivi

MET mutati

PD-L1 +

